

APPLICATION GUIDE

FXSheeting (Peel & Stick)

Product Description:

FXSheeting is a decorative product that offers a Peel & Stick laminate designed for easy application over nearly any surface. FXSheeting is a high performance product with a high range of chemical resistance for easy cleaning and has a good abrasion resistant surface with good UV stability.

Important Considerations:

- We highly recommend you read the entire application guide from beginning to end as it does contain necessary information for applying the product.
 - The quality of your finished product will depend on the amount of time and effort spent preparing the surface
 - 1 year shelf life on adhesive when stored under cool, dry conditions
 - Recommended for interior and exterior applications
 - Care must be exercised in cleaning exposed surfaces
- The product will not reposition once applied to the surface. Once applied the glue permanently bonds to surfaces making removal difficult.

FXSheeting (Peel & Stick) is available by special order in thicker films and/or with custom adhesive foam backings. Contact ALSA Corp with your special needs and requirements



This guide will walk you through the necessary preparations for applying FXSheeting to existing surfaces. The adhesive layer is a high tack; high peel strength material and will limit your ability to reposition once it is applied to the surface so work smart!

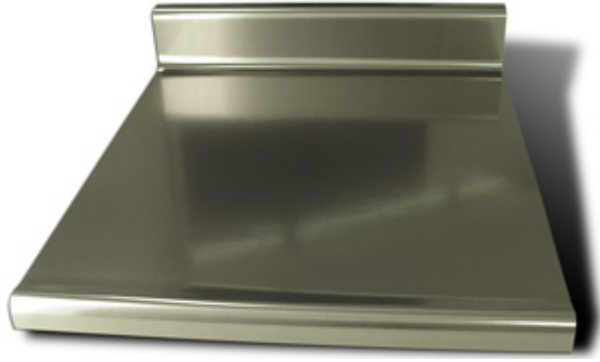
Tools you will need:

- Tape measure
- Fine sand paper (Very fine 600-1000 grit wet and dry)
- Clean lint free rag
- Straight edge (Preferably made of metal)
- Scissors and razor knife
- Surface roller
- Cleaning supplies and surface preparation
- Trimming tool or edge trimmer
- Masking tape

Do-it yourself installations:

Applying FXSheeting is like any other fine surface laminate finish the final appearance will depend on the time and care you put into the initial surface preparation. This is especially true for the high gloss mirror like FXSheeting as the quality of the reflection will be dependent on the smoothness of the surface. All surface irregularities will be enhanced by the mirror like reflection of the sheet. Careful selection of the proper sheet thickness and the available adhesive options will be important in this regard.

In planning your installation you may consider measuring all surface/area dimensions and making a sketch to view how the FXSheeting will best cover your area with a minimum amount of seams and cuts. When applying the FXSheeting BRUSHED check the grain direction. Decide which width and length is best to purchase from the layout information. Purchase the appropriate width (36 inch stock) and calculate the lineal feet required to completely cover the surface, Add 6 inches on each end to allow for uneven cuts and out of square surfaces. On the brushed metals and stainless steel rolls the grain runs horizontal to the length of the roll.



Hint: For quick applications to surfaces (for example columns, countertops, or cabinets) don't remove backing paper. Simply take one seam and clear or duct tape it to your surface, wrap around or stretch across, and add another strip of tape to the other seam. Instant Gratification! The advantage of this is you can reuse the FXSheeting if you don't like what you have created.

Surface Preparation:

Examine the surface you want to cover carefully as the durability of the adhesive bond will only be as strong as the surface on which it is applied. For highly reflective grades the quality of the mirror like reflection will be dependent on the smoothness of the surface on which it is applied.

If the surface is wall papered first remove the wall paper and clean down to the original wall surface. Repair all holes and cracks and sand smooth. On painted surfaces lightly sand to remove any surface imperfections and raised spots to create a smooth, defect free surface. Be realistic with your expectations when applying our product over such a surface. After all, FXSheeting is not real metal. Clean the surface with a mild detergent to remove all dust, oils and grease from the surface.

If the surface is new, examine to insure it is flat and free of any defects.

Over wood: Fill all holes and surface imperfections with a wood filler and sand the surface to give a smooth defect free surface. On bare wood apply a high quality priming coat to seal the wood surface. Once dry lightly sand to insure a smooth defect free surface. Surfaces such as wood should not get wet as this can raise the grain and make a prickly surface. A tack cloth can be used to remove dust particles.

Over wall board: fill all holes and depressions and sand to insure the surface is flat and smooth. Prime the surface with a high quality priming coat to seal the surface. Lightly sand the surface to insure a smooth defect free surface. Surfaces such as wall board or drywall should not get wet as this can raise the grain and make a prickly surface. A tack cloth can be used to remove dust particles

Your final product will be as good as your surface preparation

Cutting the film to size:

The FXSheeting may be easily cut and trimmed by a variety of methods. Simple cutting with a

sharp pair of scissors or a razor knife can be used to cut the film prior to installation and for complex shapes. Cutting with a paper cutter or guillotine is also possible. You will need to trim the factory edges as the product does not come with a perfect finished edge.

Application of the film:

As with everything preparation is the most important stage. Our product works best on clean, smooth surfaces free of oil, grease or soaps. Even a grain of sawdust will show under the finished surface. When applying FXSheeting BRUSHED make sure to check grain direction. Once the surface is properly prepared and the film is cut to a workable size it should be test fitted to the area with the adhesive release sheet still in place to confirm the proper placement of seams and the complete coverage of the surface. Once you are satisfied with the shape and positioning of the FXSheeting carefully lift one corner of the release covering from the adhesive surface (being careful not to scratch or damage the metal surface) and fold back along itself to reveal a portion of the adhesive. Carefully place the FXSheeting adhesive against the surface in the exact location you want as the adhesive will not permit removal and repositioning of the FXSheeting once stuck to the surface. Carefully rub the surface of the sheeting with a soft rag to force the adhesive evenly against the surface. Carefully peel the remaining adhesive backing sheet from behind the sheet exposing fresh adhesive and continue to rub the sheet surface to insure a smooth, bubble free application. You should rub from the middle to the right, middle to the left, and progress up the sheet continuing in this pattern. Once the adhesive is completely exposed and against the surface, use a rubber roller to roll the sheet surface to insure a complete and uniform contact with the surface. It is best to practice on small scrap pieces before going straight on with your project.

Seams:

Butt Seams are recommended and can be prepared by overlapping the ends of two adjoining pieces, placing a straight edge over the two pieces and cutting through both sheets simultaneously. When you want to make a mitered or butt seam you will need to leave the backing paper on both surfaces otherwise the surfaces will stick together when you cut across them. Also the ends may be butted together leaving as little space between them as possible and decorative cover strips can be cut and applied over the seams.

If you want to use an electric miter saw to cut your mitered corners apply your sheeting, then cut the substrate and the FXSheeting at the same time with the miter saw. You will need to put a backer board behind the pieces to be cut to eliminate tear out of the back edge (cut slowly and use a good sharp saw blade).

Trimming:

Trim off excess FXSheeting around the entire perimeter of the surface covered. The addition of decorative molding over the edge is recommended to give a finished professional appearance to the installation. The best way to trim excess off the edges is to use an edge trimming tool (Approximately \$16 from woodworking supply catalogs). You will get the best results by placing a strip of masking tape on any surface you intend to use the trimming tool on as the brushed chrome does not have protective sheeting. This will give you a finish where you don't need a decorative molding edge. Hold sand paper at an angle to the edge and gently sand away any remaining white backing that may be showing. Do not sand the flat surface, just the edge. This will give you the smoothest finish possible.

Removal of the protective coating:

Once you are satisfied with the contact of the FXSheeting on the surface trim to final size if necessary and remove the protective covering from the surface. The covering material is a polyethylene film and may be disposed of in the trash or recycled.

General surface maintenance:

FXSheeting should be cleaned with mild soap and water and a clean lint free rag. Abrasive cleaners should never be used when cleaning.

To obtain additional application help in the preparation and use of these products, visit the ALSA Corporations Web site at: www.alsacorp.com

Due to the inability of Alsa to anticipate or control conditions whereby Alsa products will be employed, Alsa does not represent or guarantee that any Alsa product is fit for a particular purpose. Alsa products should be tested by users to determine suitability for a particular purpose. Alsa disclaims responsibility for claims and damages beyond replacement of any defective Alsa product. There are no warranties which extend beyond the description on the face hereof.